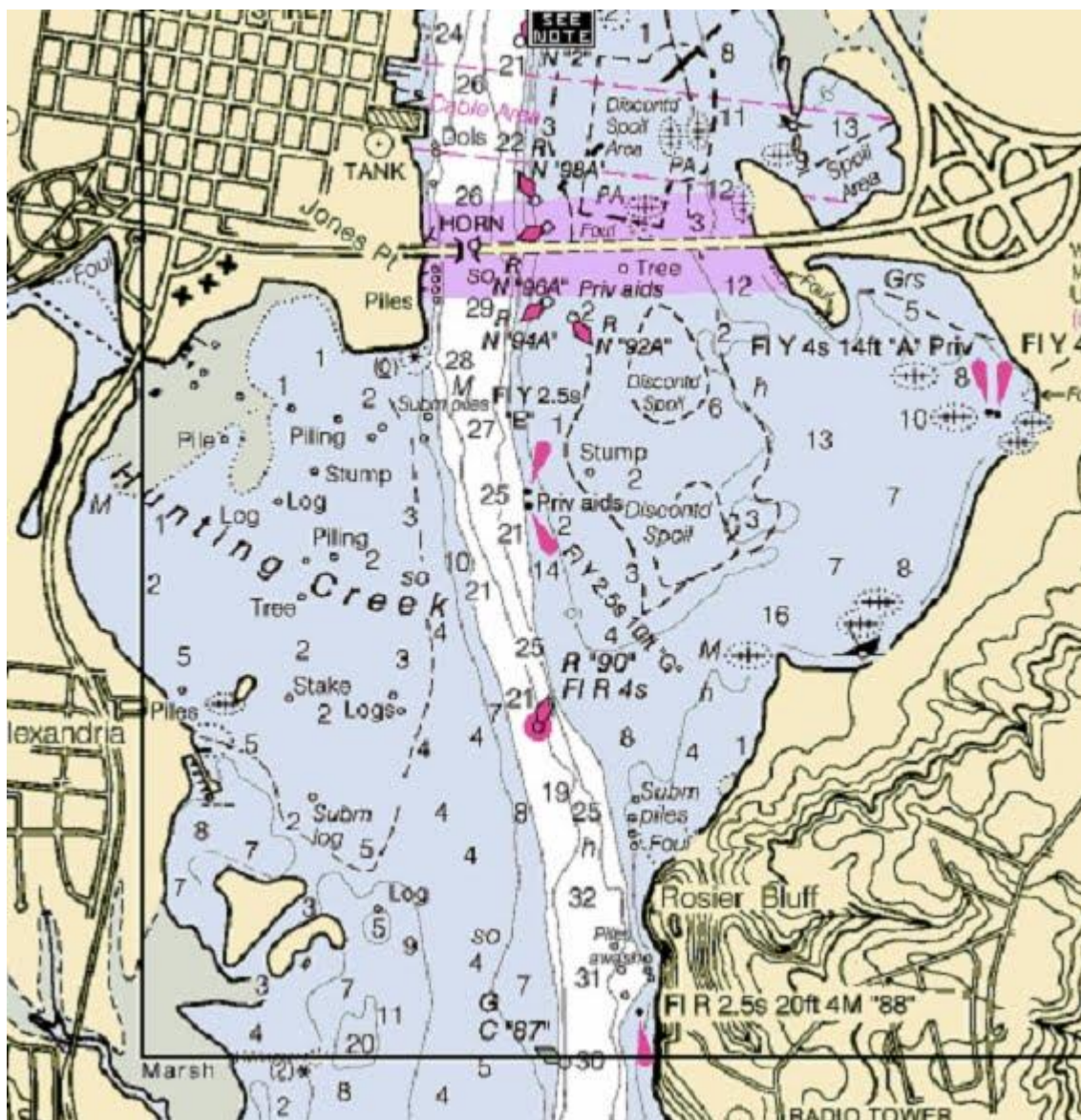


Mt. Vernon Sprint

Start:

The race uses a rabbit start at N90 south of the Wilson Bridge. In a Rabbit or gate start one competitor is identified as the rabbit. The rabbit will sail as close to a close hauled on port tack as possible from N90 if the wind is from the south if the wind is from the north the rabbit will sail at 225°. The rabbit will announce on VHF 79a as they approach N90. Announce at approximately 1 minute prior to opening the gate. Announce when the gate is open (passing close to N90). Once the gate is open, all boats (spin and non-spin) must pass in between N90 and the rabbit. The rabbit will hold course for 2 minutes or until all boats have passed behind it.

Finish: Boats finish when their bow has reached a line due west of N90 after sailing the course. All skippers will report their finish time in Hr:min:sec and send to officers@discsailing.org with the fleet sailed in.



Courses and Distance:

The turning mark will be announced by the rabbit on VHF 79a prior to the start

- The shorter course is for the non-spin division
- Turning marks are to be left to port
- The round trip distances are listed in the table

From N90 to	Distance
GC 81	7.24 mi
GC 77	9.20 mi
GC 73	11.38 mi
GC 71	13.08 mi
GC 69	14.10 mi
GC 67	15.36 mi

