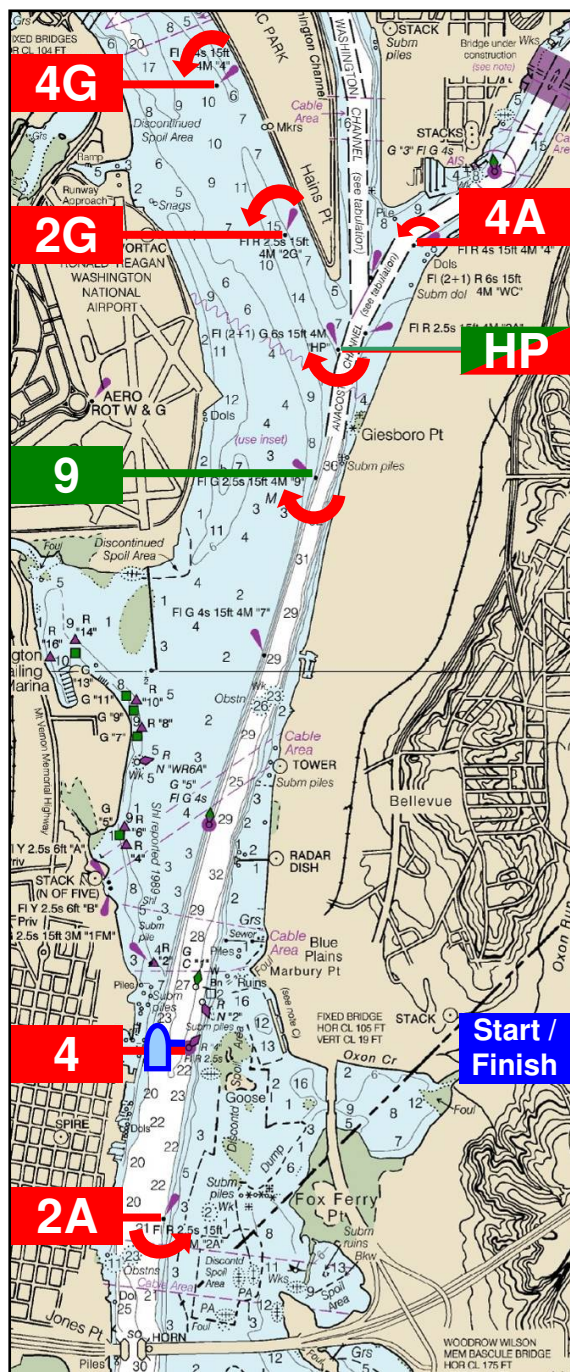


# Daingerfield Island Sailing Club

## Three Bridges Courses



The starting direction will be announced at the skippers meeting and again at the start on channel 69.

When transiting from 4A (Anacostia channel) to 2G or 4G (Georgetown channel off Potomac Park), leave HP or 9 to starboard. Leave all other turning marks to port.

| Three Bridges          |   |         |
|------------------------|---|---------|
| North Start            | S - 4A (Anacostia) - 9 (to starboard) - 4G (Potomac Park) - 2A (Wilson Bridge) - F  | 9.56 nm |
| South Start            | S - 2A (Wilson Bridge) - 4A (Anacostia) - 9 (to starboard) - 4G (Potomac Park) - F  |         |
| Three Bridges Abridged |   |         |
| North Start            | S - 4A (Anacostia) - HP (to starboard) - 2G (Potomac Park) - 2A (Wilson Bridge) - F | 8.38 nm |
| South Start            | S - 2A (Wilson Bridge) - 4A (Anacostia) - HP (to starboard) - 2G (Potomac Park) - F |         |
| Two Bridges            |   |         |
| North Start            | S - 4G (off Potomac Park) - 2A (off Wilson Bridge) - F                              | 7.52 nm |
| South Start            | S - 2A (off Wilson Bridge) - 4G (off Potomac Park) - F                              |         |