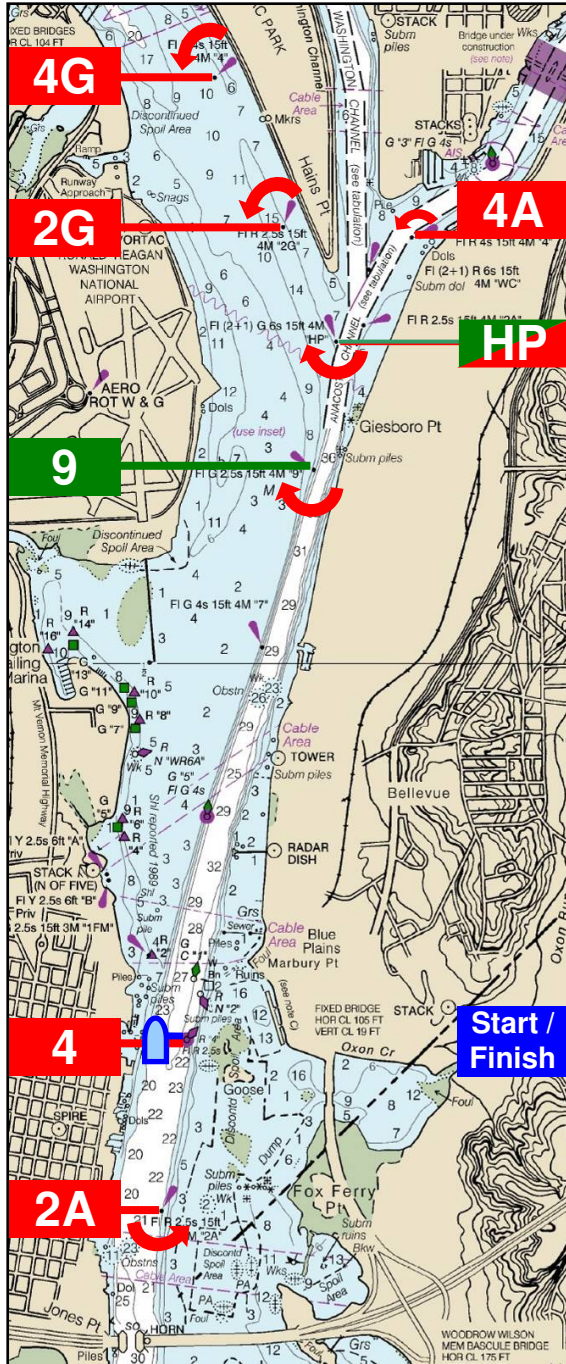


Daingerfield Island Sailing Club

Three Bridges Courses



Three Bridges		
North Start	S - 4A (Anacostia) - 9 (to starboard) - 4G (Potomac Park) - 2A (Wilson Bridge) - F	9.56 nm
South Start	S - 2A (Wilson Bridge) - 4A (Anacostia) - 9 (to starboard) - 4G (Potomac Park) - F	
Three Bridges Abridged		
North Start	S - 4A (Anacostia) - HP (to starboard) - 2G (Potomac Park) - 2A (Wilson Bridge) - F	8.38 nm
South Start	S - 2A (Wilson Bridge) - 4A (Anacostia) - HP (to starboard) - 2G (Potomac Park) - F	
Two Bridges		
North Start	S - 4G (off Potomac Park) - 2A (off Wilson Bridge) - F	7.52 nm
South Start	S - 2A (off Wilson Bridge) - 4G (off Potomac Park) - F	
Two Bridges Abridged		
North Start only	S - 2G (off Potomac Park) - F	6.28 nm

When transiting from 4A (Anacostia channel) to 2G or 4G (Georgetown channel off Potomac Park), leave HP or 9 to starboard. Leave all other turning marks to port.