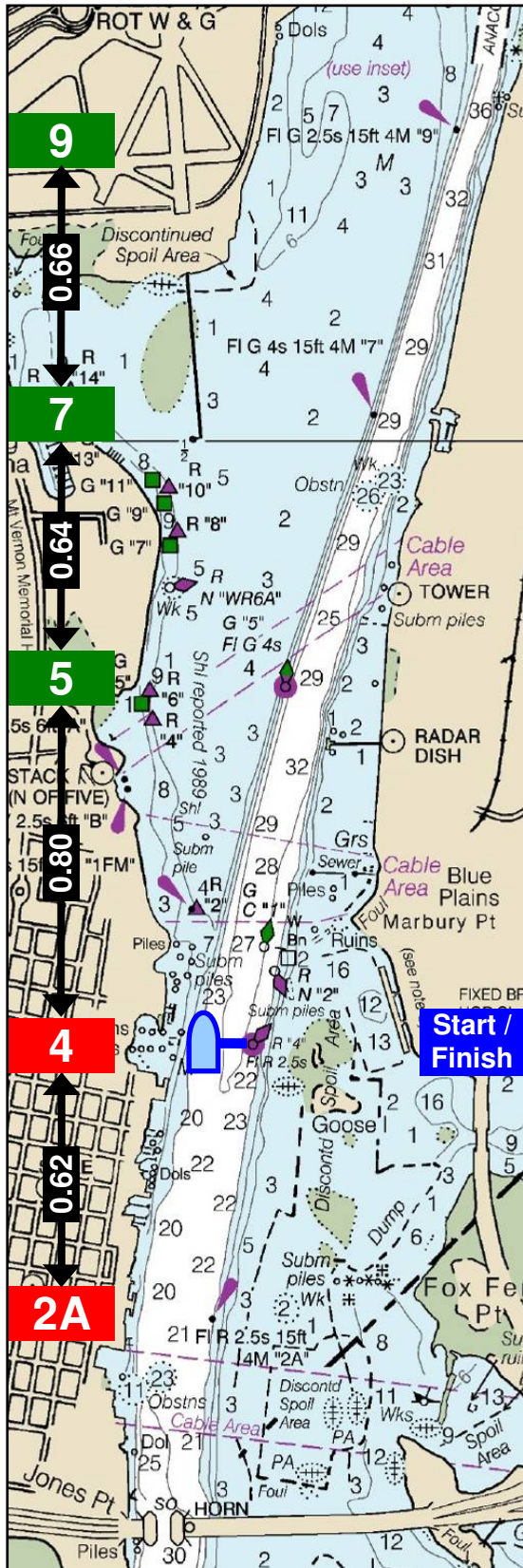


Daingerfield Island Sailing Club

Middle Courses



ID	Course	NM
Southbound Start		
A	S - 2A - F	1.24
2A	S - 2A - 4 - 2A - F	2.49
C	S - 2A - 5 - F	2.85
3A	S - 2A - 4 - 2A - 4 - 2A - F	3.73
D	S - 2A - 7 - F	4.12
F	S - 2A - 9 - F	5.47
2C	S - 2A - 5 - 2A - 5 - F	5.71
G	S - 2A - 9 - 2A - F	6.71
2D	S - 2A - 7 - 2A - 7 - F	8.28
3C	S - 2A - 5 - 2A - 5 - 2A - 5 - F	8.56
2F	S - 2A - 9 - 2A - 9 - F	10.93
X	custom course set by RC	
Northbound Start		
RB	S - 5 - F	1.61
RC	S - 5 - 2A - F	2.85
2RB	S - 5 - 4 - 5 - F	3.22
RD	S - 7 - 2A - F	4.12
RE	S - 5 - 2A - 5 - F	4.46
3RB	S - 5 - 4 - 5 - 4 - 5 - F	4.83
RF	S - 9 - 2A - F	5.47
2RC	S - 5 - 2A - 5 - 2A - F	5.71
RH	S - 7 - 2A - 7 - F	7.04
2RD	S - 7 - 2A - 7 - 2A - F	8.28
2RI	S - 9 - 4 - 9 - F	8.44
3RC	S - 5 - 2A - 5 - 2A - 5 - 2A - F	8.56
RJ	S - 9 - 2A - 9 - F	9.69
2RF	S - 9 - 2A - 9 - 2A - F	10.93
RX	custom course set by RC	

Decoding the course modifiers:

R = Reverse (northbound start)

S = Starboard rounding

= Number of laps

X = RC-designed custom course

For example, 2SRJ means two laps around the J course in reverse order and round all the marks to starboard.